



# Broomhill Infant School

Nature, Nurture, Knowledge

The nurture  
group network   
helping children to succeed

  
FOREST SCHOOL  
ASSOCIATION



# Early Years Team



Mrs Amie



Mrs Deb



Mrs Stacey



Mrs Sharon



Mrs Pat



Mrs Lynne



A day in the life of  
an EYFS child...

# The day begins promptly at 8.45 am

All the children gather in the big playground from 8.35 am. Children are not permitted to play on the trim trail due to insurance and health & safety restraints.

The bell will ring at 8.40 am.

The teachers will lead the children to the classroom at 8.45 am.

During the settling in period you will be able to go with your child to their classroom to help settle them in.

# Register

- Register closes at 8.55 am
- If your child is late you will need to go to the office to sign the late register and say goodbye.
- If your child is going to be absent, please try to ring the school office before 9.00am.



# Early Years Foundation Stage Curriculum

<https://www.gov.uk/early-years-foundation-stage>

| Area of Learning and Development                  | Aspect                                  |
|---|---|
| <b>Prime Areas</b>                                |   |
| <b>Personal, Social and Emotional Development</b> | Making relationships                    |
|   | Self-confidence and self-awareness      |
|   | Managing feelings and behaviour         |
| <b>Physical Development</b>                       | Moving and handling                     |
|   | Health and self-care                    |
| <b>Communication and Language</b>                 | Listening and attention                 |
|   | Understanding                           |
|   | Speaking                                |
| <b>Specific areas</b>                             |   |
| <b>Literacy</b>                                   | Reading                                 |
|   | Writing                                 |
| <b>Mathematics</b>                                | Numbers                                 |
|   | Shape, space and measure                |
| <b>Understanding the World</b>                    | People and communities                  |
|   | The world                               |
|   | Technology                              |
| <b>Expressive Arts and Design</b>                 | Exploring and using media and materials |
|   | Being imaginative                       |

# Early Years Education

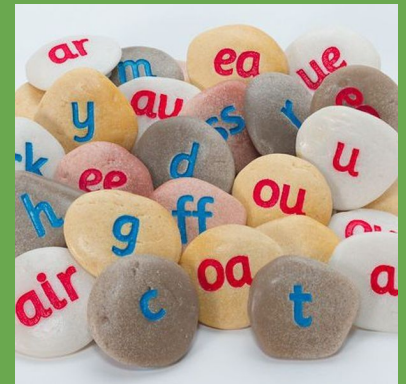
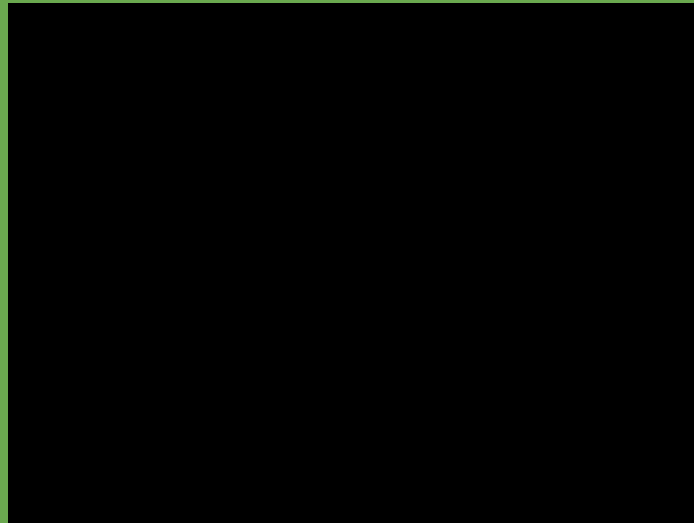
In the Early Years your child will follow an '**In the Moment**' approach. This means that your child's interests are at the heart of their learning.

Our Teachers and Learning Support Assistants are specially trained to take every opportunity to develop literacy & maths knowledge, skills and understanding through every learning opportunity.

<https://www.youtube.com/watch?v=lcjVPzLVpBI>

# Phonics

## DfE Letters and Sounds







# Reading



<https://www.youtube.com/watch?v=AX2HU0NRcgl>

you're never  
too **OLD**  
too **wacky**  
too **wild**  
to pick up a book,  
& read to a  
child.  
dr. seuss

Please visit  
our woodland  
school  
library to  
share or  
take home a  
book.

Welcome Wednesdays - Family reading time.  
Reading Rangers after school club.

# Writing



Funky Fingers and Dough Disco support the development of fine motor skills.

<https://www.teachhandwriting.co.uk/teach-handwriting-parents.html>



I watched a  
dinosaur movie  
it was sooper  
exsiting

I haf mayd his sumreeyn  
it is speshe

dot EVCH!



# Maths Skills & Understanding



Fun, meaningful, purposeful and practical.

# Numicon

<https://www.youtube.com/watch?v=Lqf7AssF9Kc>

In September each child in Reception will be given a Numicon set to keep at home for the school year.

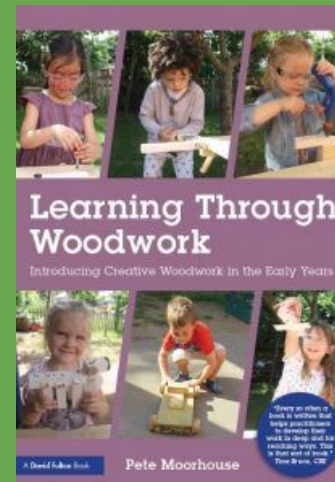
Please take a handout that explains some of the activities that will support your child's understanding of number.



# Creative Thinking through Wood Work



Pete Moorhouse is passionate about encouraging creative thinking in the Early Years. He has led training and supports the development of our woodwork shed.



# Role Play



# Block Play



# Small World Play



# Sand & Water Play





Art



Play Dough



Sensory Play



Music

I wet to zantai. I saw a ship  
rec.



Frankie

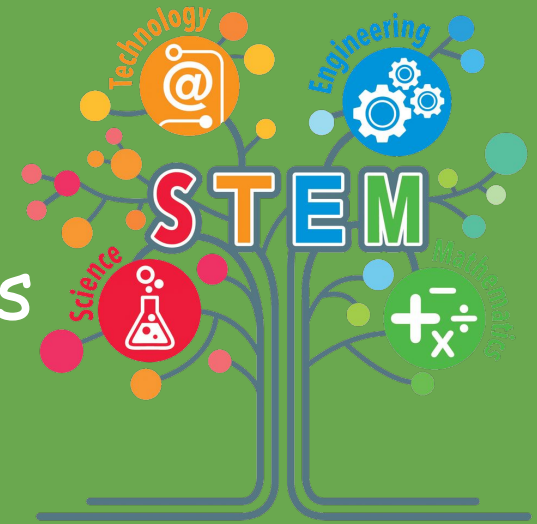
IT

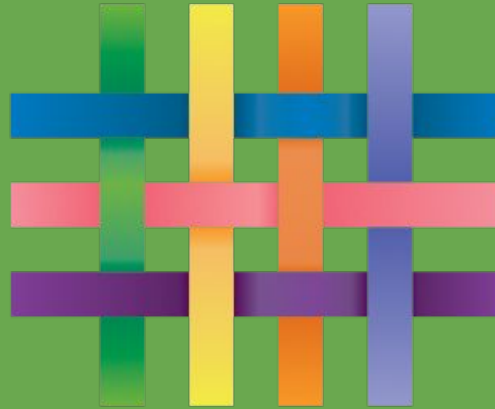




# STEM

Tinkering Tuesdays & Thursdays





TAPESTRY  
ONLINE LEARNING  
JOURNAL

<https://eylj.org/>

# Clothing for outdoor learning

Please provide warm, coats and wellies for outdoor learning in the colder months and sunhats when the sun is shining.



# Lunchtime 11.30 - 12.30

- Teachers, Learning Support Assistants and Lunchtime Supervisors look after your children at lunchtime.
- In the Early Years we have a family style lunchtime. Adults eat their lunch with the children to model and support, encourage children to try new foods and join in conversations with your children.
- All school aged children are entitled to a free school meal. All day nursery children will need to pay for lunch. £1.82
- Children can bring their own packed lunch.
- The rest of the lunch break is spent outside in the play areas. If it is raining the children remain in their classrooms.

# School Trips & Visitors

- A fantastic way of enhancing learning through new experiences. Opportunities to develop knowledge, confidence and social awareness.
- High child adult ratio
- Detailed risk assessments



TRAVELLING  
THEATRE COMPANY



# School Uniform

- Please sign the register for a free school sweatshirt.
- Link to the uniform supplier is on the school website, however it is currently being updated as we have a new school logo and green uniform.

<http://www.broomhill-inf.bristol.sch.uk/>

- Green jumper, sweatshirt, cardigan or fleece.
- White polo shirt.
- Black or grey jogging bottoms, trousers, leggings, or skirt.
- Black sensible footwear.
- Please write your child's name in all clothing.
- Support your child to become independent with their coat, clothing and shoes at home.



# Toilet issues



- If your child has any toilet issues please talk to us. We are here to help.
- Please provide a bag that will remain in school containing named, spare school uniform and underwear. Accidents happen!
- Think about enabling your child to become independent when removing clothing to be able to go to the toilet.
- If your child is in nappies, please provide nappies, wet-wipes and nappy bags.

# What happens about Discipline?

- We encourage and reward positive behaviour.
- All classes create their own class charter to keep all children safe and happy.
- Dojo is used as a behaviour reward system. This has been successful in KS1. It will be introduced into EYFS in September. Parents are able to log on and view learning and messages.
- You know your children best, we work alongside you to ensure each child's individual needs are met.





# Our wonderful PTA Friends of Broomhill



# School Governors



Chair of Governors - Mair Allen  
Governing body has representatives  
from parents, staff and community.

# Breakfast and Afterschool Clubs

Nursery to Year 2 and their older siblings at the Junior School

Breakfast Club - 7.30 am until 8.45 am      £4 per day

After school club - 3.15 pm until 6.00 pm. Led by school LSAs who plan a high quality experiences including; art, cookery, photography, African drumming, PE, dance, nature walks and much more.

3.15pm -4.15pm   £5.00

3.15pm - 5.00pm   £7.00

3.15pm - 6.00pm   £9.00

All information is on the school website.

<http://www.broomhill-inf.bristol.sch.uk/>

# Working in Partnership

Children learn a great deal from their parents and teachers. Home and school are the two most powerful influences on your child and they should be seen to be always working together.

Please ensure your child attend regularly and is punctual.

Attend meetings when requested

Help with homework

We are always looking for volunteers. You will find a Helping Hands form to complete if you would like to, or pop along to the main reception.



We are really looking forward to getting to know you and your children and we hope you are excited too!

Thank you

